



## How to update iBase Radio firmware

### Technical FAQ



Surveying | July 2025

## Preparation

- 1) One computer which can connect WIFI
- 2) Receiver
- 3) Radio firmware

### 1. Connect Receiver

#### Steps:

Use a computer to connect the WIFI of receiver, the WIFI name is the SN of the receiver, the password is 12345678(normally no need password).

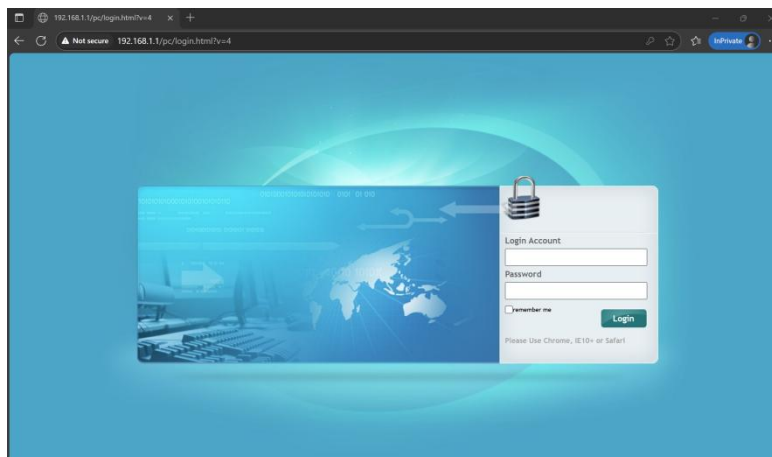
**Noted:** If you can not search the WIFI, just short press the power button of the receiver to activate the WIFI.

### 2. Update via Webpage

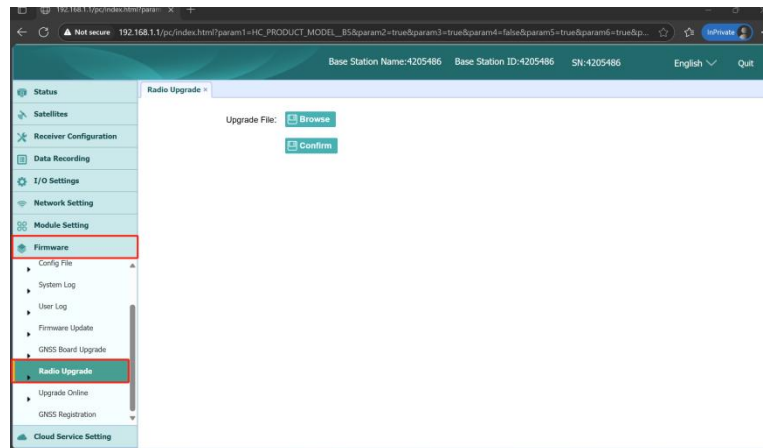
#### Steps:

- 1) Open the browser and enter the page with the URL 192.168.1.1.

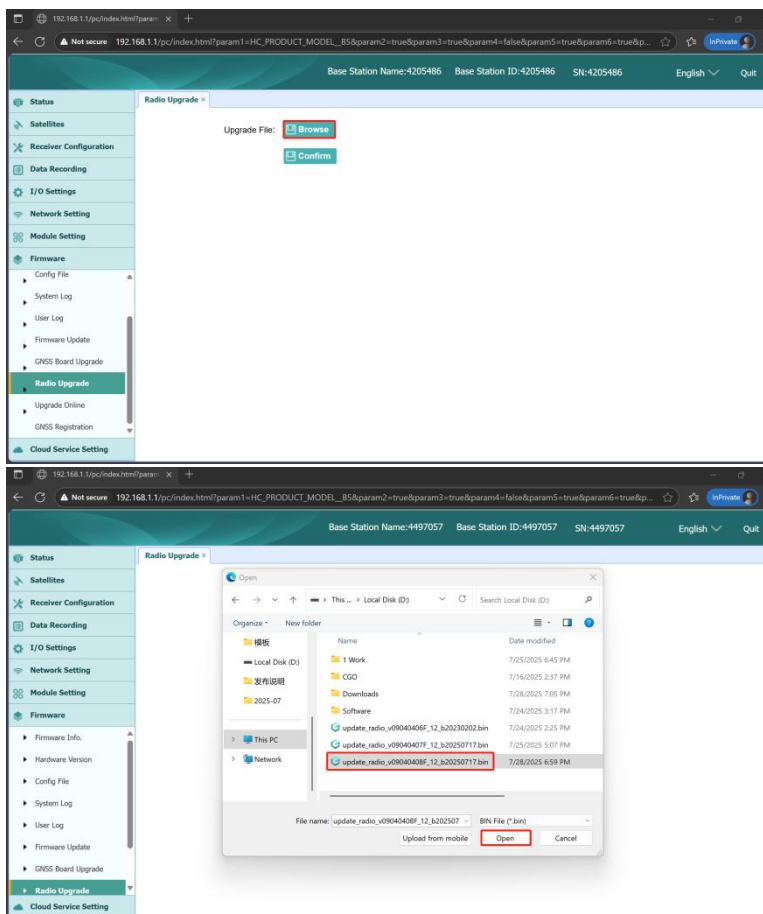
(**Noted:** login account: admin, password: password)



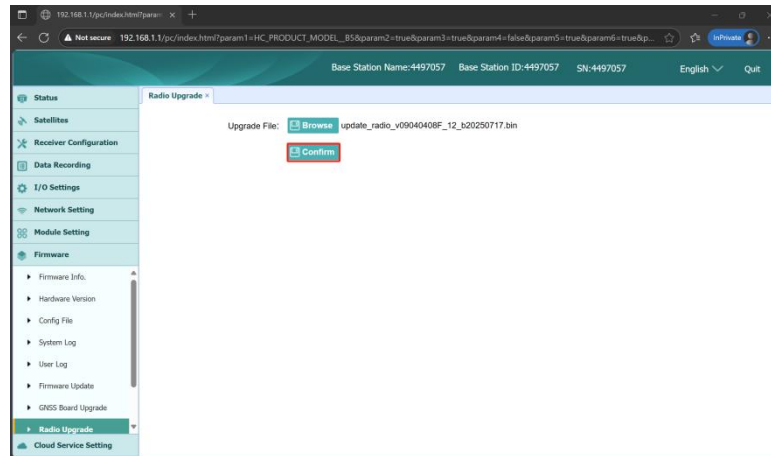
- 2) After logging in, select the **Firmware** option from the left options bar and click on **Radio Upgrade**.



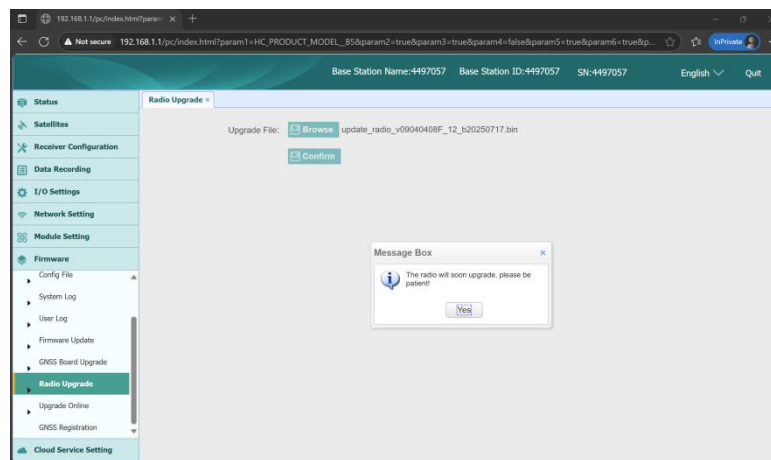
3) Click on **Browse** to choose the radio firmware file.



4) Click on **Confirm** to start updating.



5) Click on **Yes**



6) Now, the iBase screen will show **“Updating...”** , and when the update is complete, the screen will display **“Update success!”**. Finally, just wait for it to restart automatically.





### **CHC Navigation**

Building C, NO. 577 Songying Road,  
Qingpu District, 201703 Shanghai, China

Tel: +86 21 542 60 273 | Fax: +86 21 649 50 963

Email: [sales@chcnav.com](mailto:sales@chcnav.com) | [support@chcnav.com](mailto:support@chcnav.com)

Skype: [chc\\_support](https://www.skype.com/people/chc_support)

Website: [www.chcnav.com](http://www.chcnav.com)